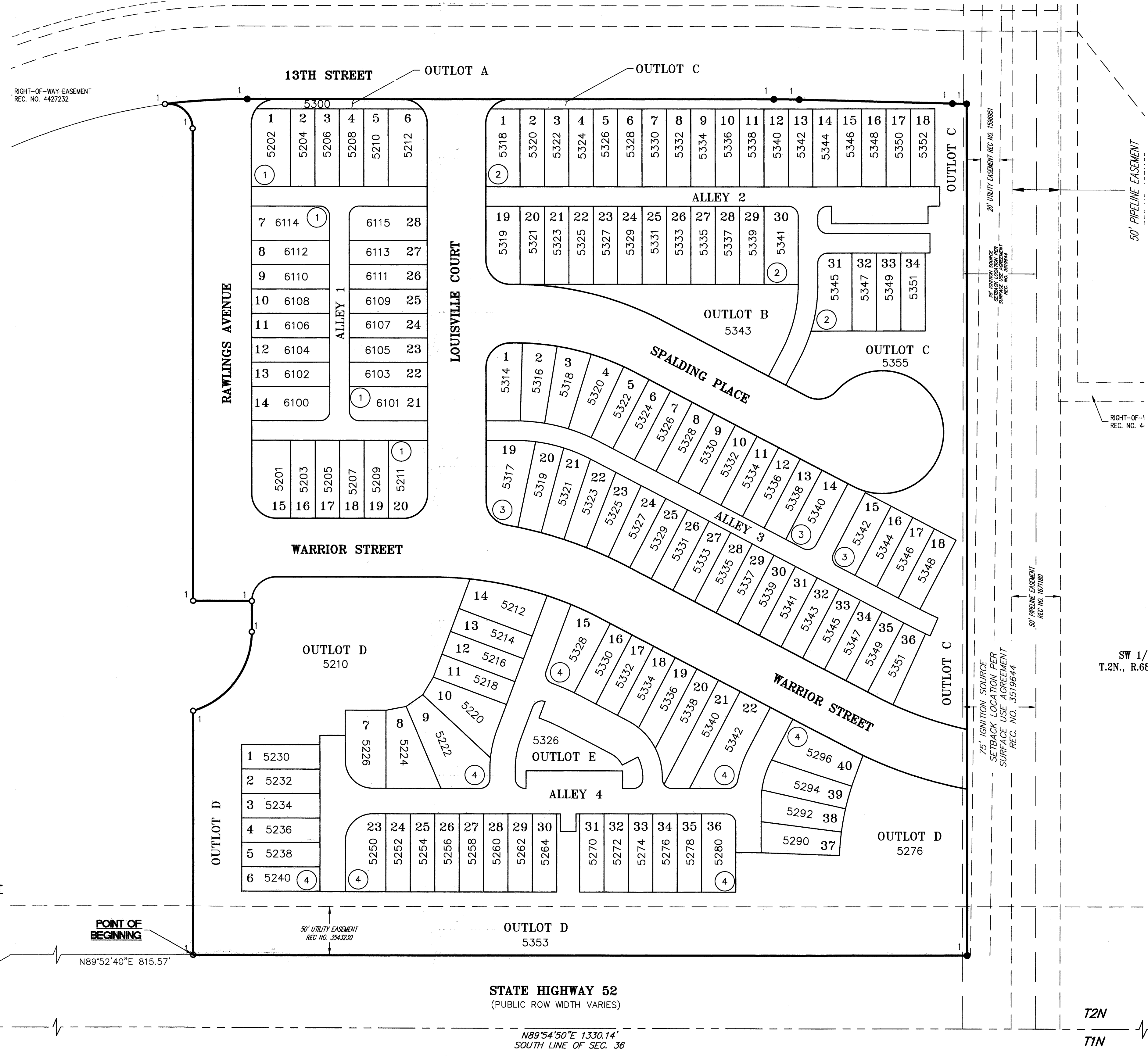


# SILVERSTONE FILING NO. 3

A PORTION OF PLANNING AREA  
 A PART OF THE SOUTHWEST QUARTER OF SECTION 36, TOWNSHIP 2 NORTH, RANGE 68 WEST OF THE SIXTH PRINCIPAL MERIDIAN,  
 TOWN OF FREDERICK, COUNTY OF WELD, STATE OF COLORADO.  
 15.838 ACRES - 138 LOTS - 7 OUTLOTS  
 ADDRESS PLAT

W 1/4 COR SEC 36 T2N,  
 R68W, 6TH P.M.,  
 FOUND 3 1/4" BRASS  
 CAP IN MONUMENT BOX



(BASIS OF BEARINGS)  
 WEST LINE OF THE SW 1/4 OF SEC. 36  
 N00°09'21"E 2651.42'

POINT OF COMMENCEMENT  
 SW COR SEC. 36,  
 T2N, R68W, 6TH  
 P.M., FOUND 2  
 1/2" ALUMINUM  
 CAP ILLEGIBLE IN  
 MONUMENT BOX  
 0.7 FEET DOWN

POINT OF BEGINNING

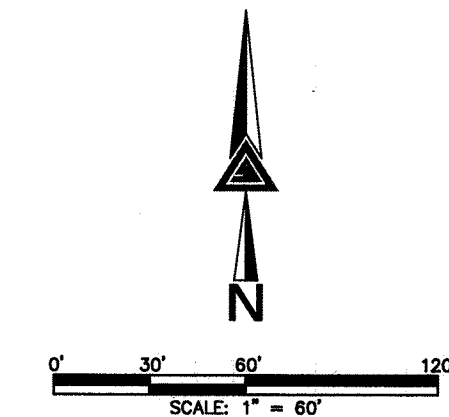
N89°52'40"E 815.57'

STATE HIGHWAY 52  
 (PUBLIC ROW WIDTH VARIES)

N89°54'50"E 1330.14'  
 SOUTH LINE OF SEC. 36

T2N  
 T1N

S 1/4 COR SEC 36 T2N, R68W, 6TH P.M.,  
 FOUND 2 1/2" ALUMINUM CAP STAMPED  
 "PLS 24305 2002" 0.5' DOWN



LEGEND	
	FOUND SECTION CORNER AS SHOWN HEREON
	SET NO. 5 REBAR WITH 1-1/4" ORANGE PLASTIC CAP STAMPED "AZTEC PLS 38291"
	FOUND NO. 5 REBAR WITH 1-1/4" ORANGE PLASTIC CAP STAMPED "AZTEC PLS 38291"
	R.O.W. RIGHT-OF-WAY

**AZTEC**  
 CONSULTANTS, INC.  
 300 East Mineral Ave., Suite 1  
 Littleton, Colorado 80122  
 Phone: (303) 713-1898  
 Fax: (303) 713-1897  
 www.aztecconsultants.com

**DEVELOPER**  
 RICHMOND AMERICAN HOMES  
 4350 SOUTH MONACO STREET  
 DENVER, COLORADO 80237  
 (303) 850-5760

DATE OF PREPARATION:	11-07-2018
SCALE:	1"=60'
SHEET 1 OF 1	

LAST REVISED: 4/30/2019

AzTec Proj. No.: 21418-40

Drawn By: J.A.E.