



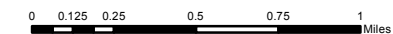
TOWN OF FREDERICK

Parks and Open Space

- Existing Pedestrian Underpass
- Future Pedestrian Underpass
- Trail Head
- Existing Parks, Open Space and Nature Features**
 - Conservation Easement/Open Space
 - Community Park
 - District Park
 - Neighborhood Park
 - Public/Quasi-Public Facilities
 - Wetland
 - Flood Plain
- Community Facilities**
 - Elementary School/Existing
 - Charter School/Existing
 - High School/Existing
 - Elementary School/Proposed
 - Middle School/Proposed
 - High School/Proposed
 - Existing Facility
- Transportation**
 - Collector
 - 2-Lane Arterial
 - 4-Lane Arterial
 - 4-Lane Highway Arterial
 - Interstate
 - Modified Arterial
 - Park and Ride
 - Town Boundary
 - Planning Area Boundary

Note 1: Trail, park, and open space locations are subject to negotiations with landowners. Future park and open space locations will be defined in conjunction with development or as opportunities arise.

Note 2: Evaluations for potentially sensitive areas and wetlands will be conducted prior to development on all sites.



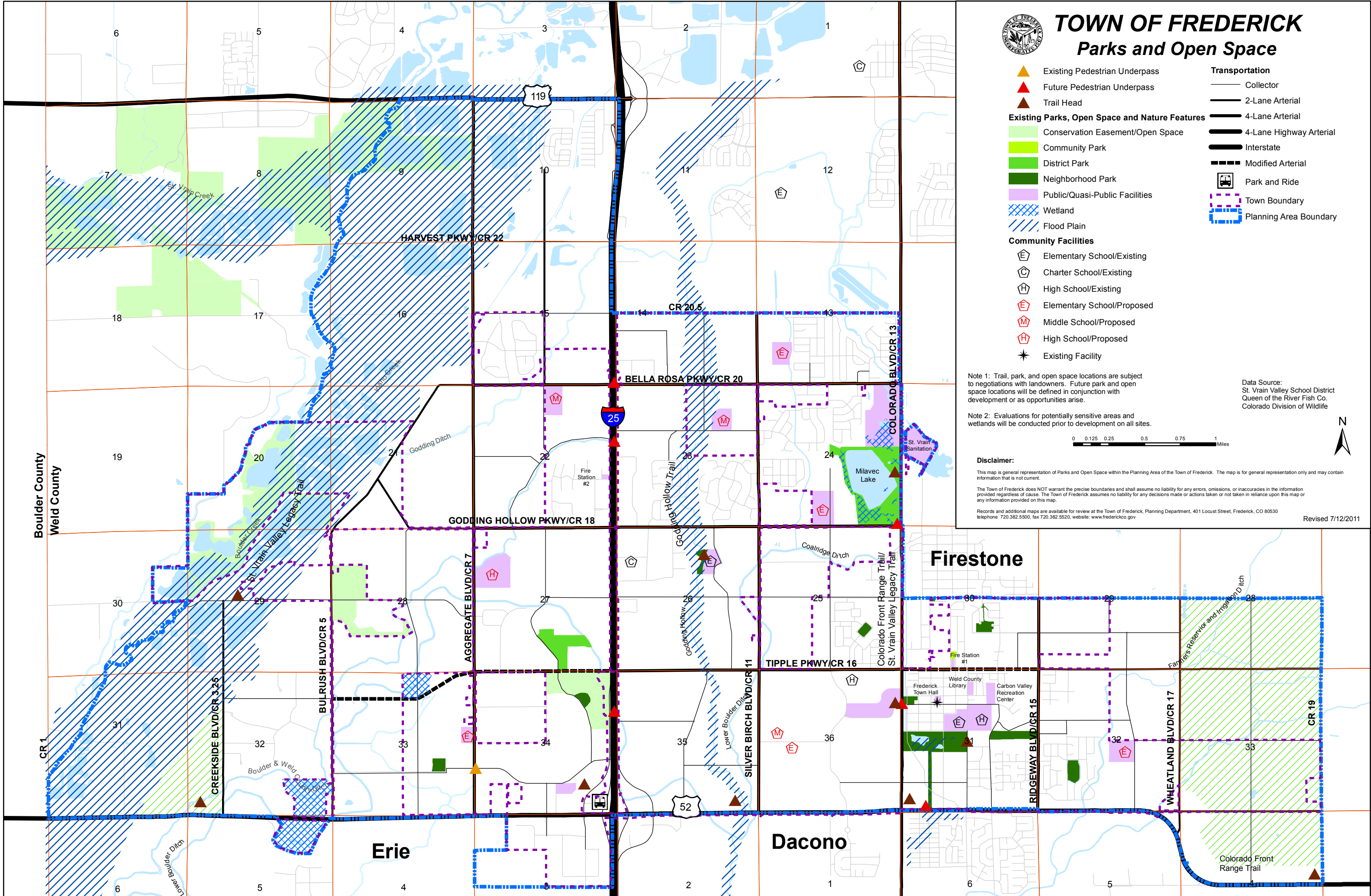
Disclaimer:

This map is general representation of Parks and Open Space within the Planning Area of the Town of Frederick. The map is for general representation only and may contain information that is not current.

The Town of Frederick does NOT warrant the precise boundaries and shall assume no liability for any errors, omissions, or inaccuracies in the information provided regardless of cause. The Town of Frederick assumes no liability for any decisions made or actions taken or not taken in reliance upon this map or any information provided on this map.

Records and additional maps are available for review at the Town of Frederick, Planning Department, 401 Locust Street, Frederick, CO 80530 telephone 720.382.5500, fax 720.382.5520, website: www.frederickco.gov

Revised 7/12/2011



Boulder County
Weld County

Firestone

Erie

Dacono

Colorado Front Range Trail