



TOWN OF FREDERICK

Comprehensive Plan

Adopted by the Planning Commission April 20, 2006
Revised 7/12/2011

Community Facilities

- Elementary School/Existing
- High School/Existing
- Charter School/Existing
- Elementary School/Proposed
- Middle School/Proposed
- High School/Proposed
- Existing Facility
- Park and Ride
- Town Boundary
- Planning Area Boundary

Transportation

- Collector Road
- 2-Lane Arterial
- 4-Lane Arterial
- 4-Lane Highway Arterial
- Interstate Highway
- Modified Arterial

Land Use

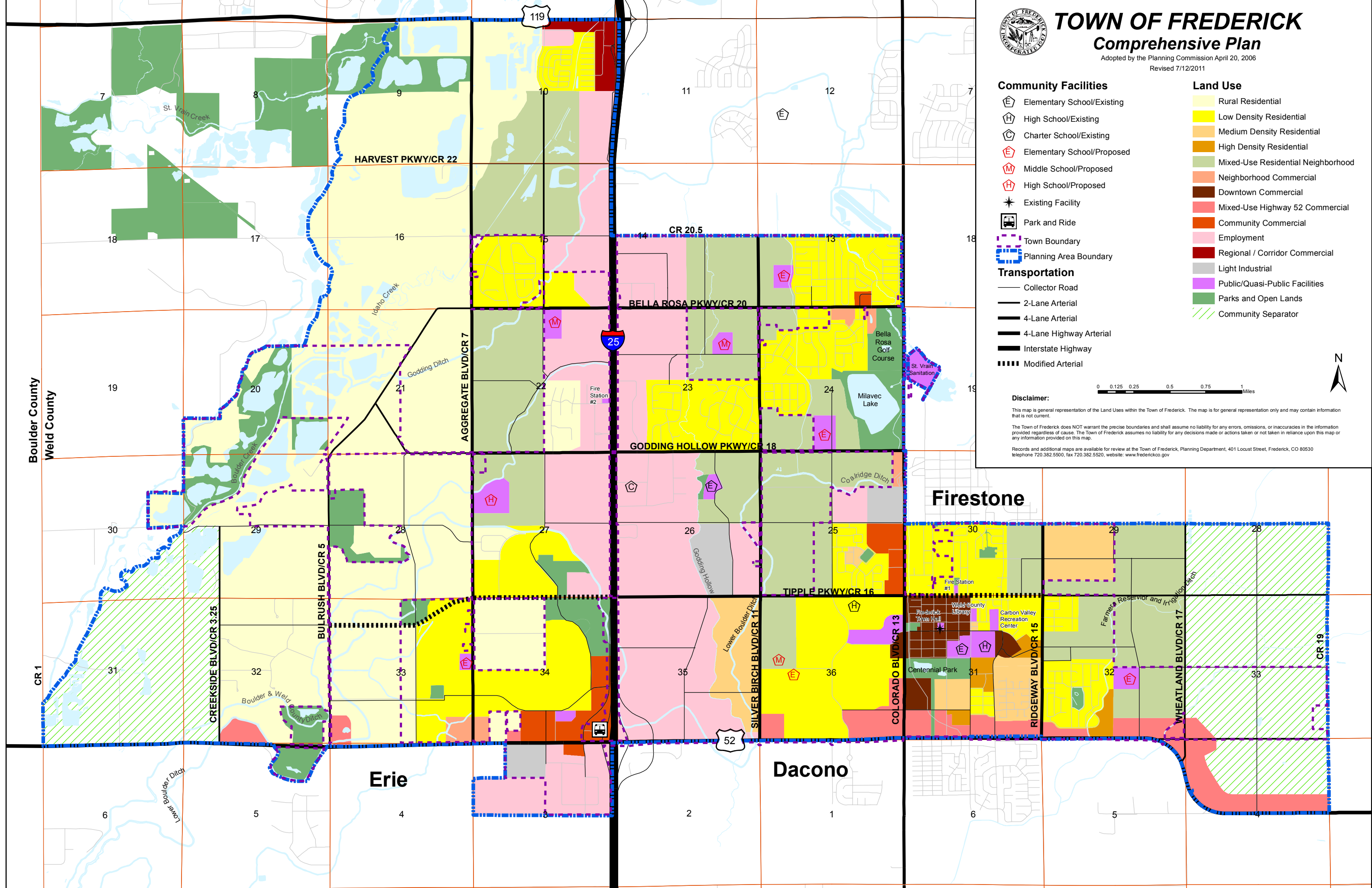
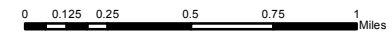
- Rural Residential
- Low Density Residential
- Medium Density Residential
- High Density Residential
- Mixed-Use Residential Neighborhood
- Neighborhood Commercial
- Downtown Commercial
- Mixed-Use Highway 52 Commercial
- Community Commercial
- Employment
- Regional / Corridor Commercial
- Light Industrial
- Public/Quasi-Public Facilities
- Parks and Open Lands
- Community Separator

Disclaimer:

This map is general representation of the Land Uses within the Town of Frederick. The map is for general representation only and may contain information that is not current.

The Town of Frederick does NOT warrant the precise boundaries and shall assume no liability for any errors, omissions, or inaccuracies in the information provided regardless of cause. The Town of Frederick assumes no liability for any decisions made or actions taken or not taken in reliance upon this map or any information provided on this map.

Records and additional maps are available for review at the Town of Frederick, Planning Department, 401 Locust Street, Frederick, CO 80530 telephone 720.382.5500, fax 720.382.5520, website: www.frederickco.gov



Boulder County
Weld County

Firestone

Erie

Dacono